

# Wedgetail Accessory Aerial Mount Fitting Instruction

## To Suit Mitsubishi Triton 2015-2024 MQ/MR Dual Cab



**Congratulations on the purchase of your Australian made Wedgetail Roof Rack product.**

Please read and follow the instructions carefully to ensure correct fitment.

Contact us if any parts appear missing, incorrect, or damaged.

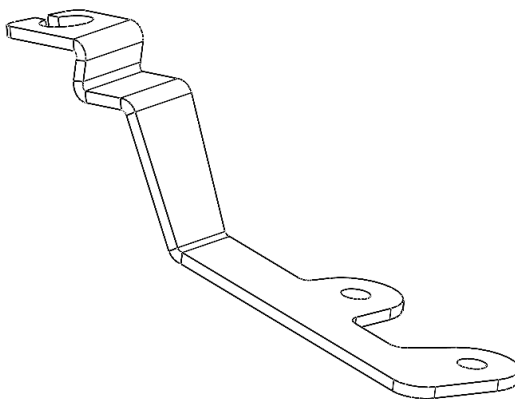
### **Tools Required:**

- Handheld Ratchet
- 12mm Socket

### **Kit Contents**

**1**

**Aerial Mount**



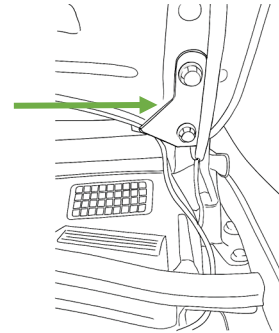
# Wedgetail Accessory Aerial Mount Fitting Instruction

## To Suit Mitsubishi Triton 2015-2024 MQ/MR Dual Cab



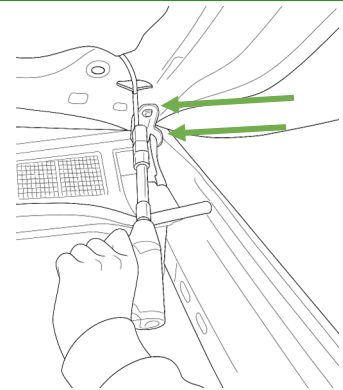
1

- Open the Bonnet and locate the hinge on the passenger side of the vehicle



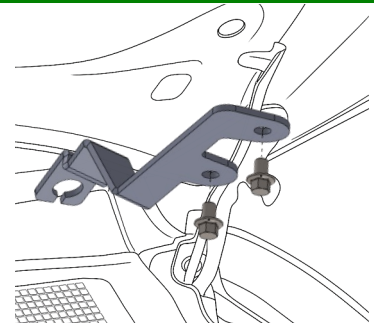
2

- Remove the two factory hinge nuts that support the bonnet



3

- Align the mounting holes in the bracket underneath the hinge and the bonnet



4

- Re-tighten the original nuts back through both the Aerial Mount and the hinge

5

- Close the bonnet and connect the Aerial



### Fitting Note:

check for clearance of the Aerial Mount after installation to ensure it doesn't interfere with the body of the vehicle

