

### Congratulations on the purchase of your Australian made Wedgetail Roof Rack product.

Please read and follow the instructions carefully to ensure correct fitment.

Contact us if any parts appear missing, incorrect, or damaged.

Clean the roof prior to fitting the roof racks.

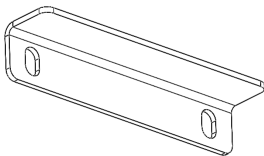
### Tools Required:

Nutsert gun, Hex Key

### Kit Content

1

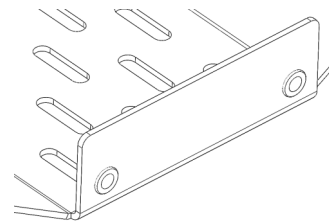
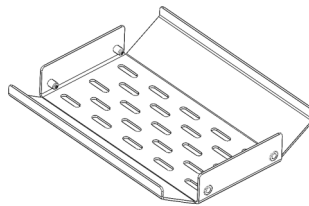
Side



x2

2

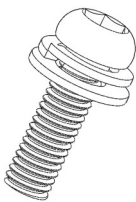
Center Mount with nutsert



x1

3

M6 x 20 Sems Black



x4

4

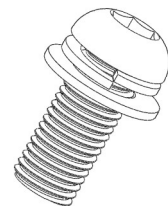
M8 Unistrut



x4

5

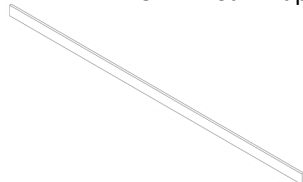
M8x22 Dacro Black



x4

6

25mm Foam Tape

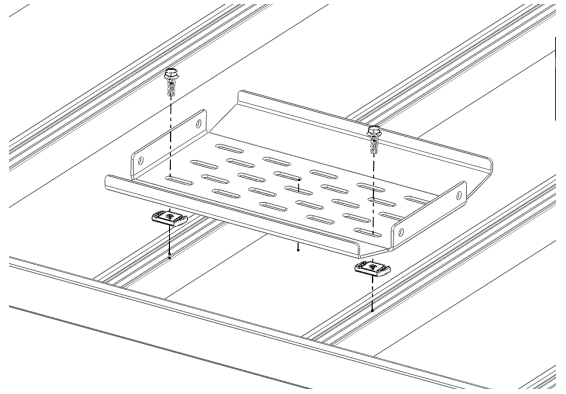


x2

### Assemble to Platform

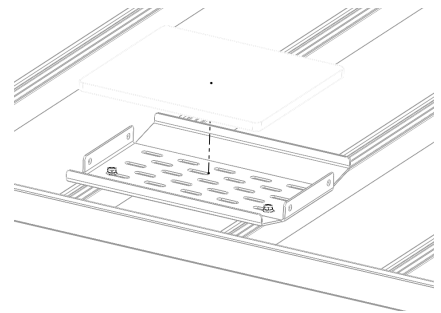
1

- Position the mount centrally over the roof-rack crossbars, aligning the available side slots with the channels.
- The kit includes Wedgetail **M8 channel nuts** for the roof-rack channels beneath each slot, ensuring they sit flat and parallel. Alternative fixings can be used.
- Feed the **M8 dacro bolts** down through the mount slots and into the channel nuts; tighten evenly with a 13 mm spanner, keeping the tray square to the rack.



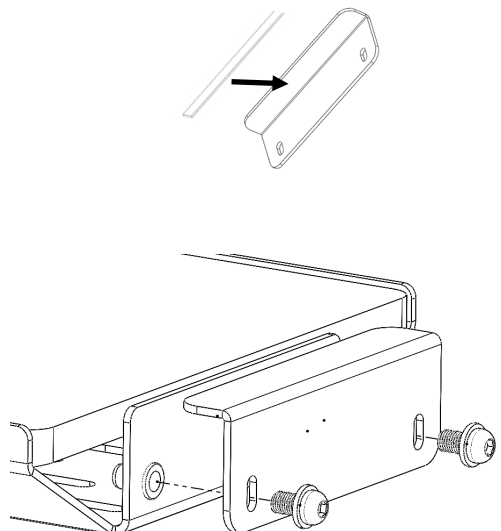
2

- Position the **Starlink mini** centrally onto the mount, ensuring the base aligns.



3

- Trim to size and attach the foam tape to the under-side of the bracket
- Position the **side bracket** firmly against the top edge of the Starlink housing, ensuring full contact
- Insert **M6 dome-head bolts** through the bracket holes, and thread them into the nutserts.
- Tighten both bolts evenly using a 10 mm socket or Allen key until the bracket sits snug with no movement, ensuring even pressure across the Starlink top surface.
- Repeat for the other side



**Thank you for your purchase.**